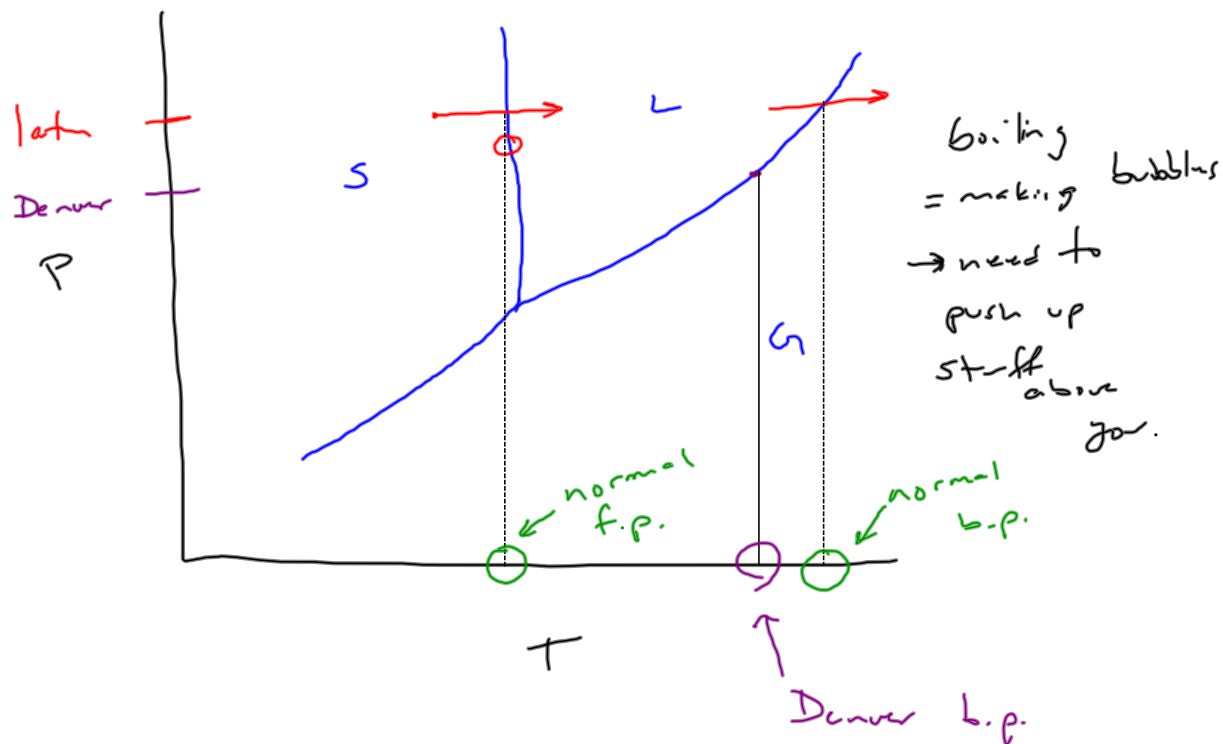


Pressure and phase changes

$P \uparrow$  molecules pushed together  
 $\hookrightarrow$  more time near each other  
 $\hookrightarrow$  attr. more effective  
 $G \rightarrow L$

$P \uparrow$  ... go to denser phase

Phase diagrams



### More phase diagram stuff

phase changes, critical point, triple point, water v everything

