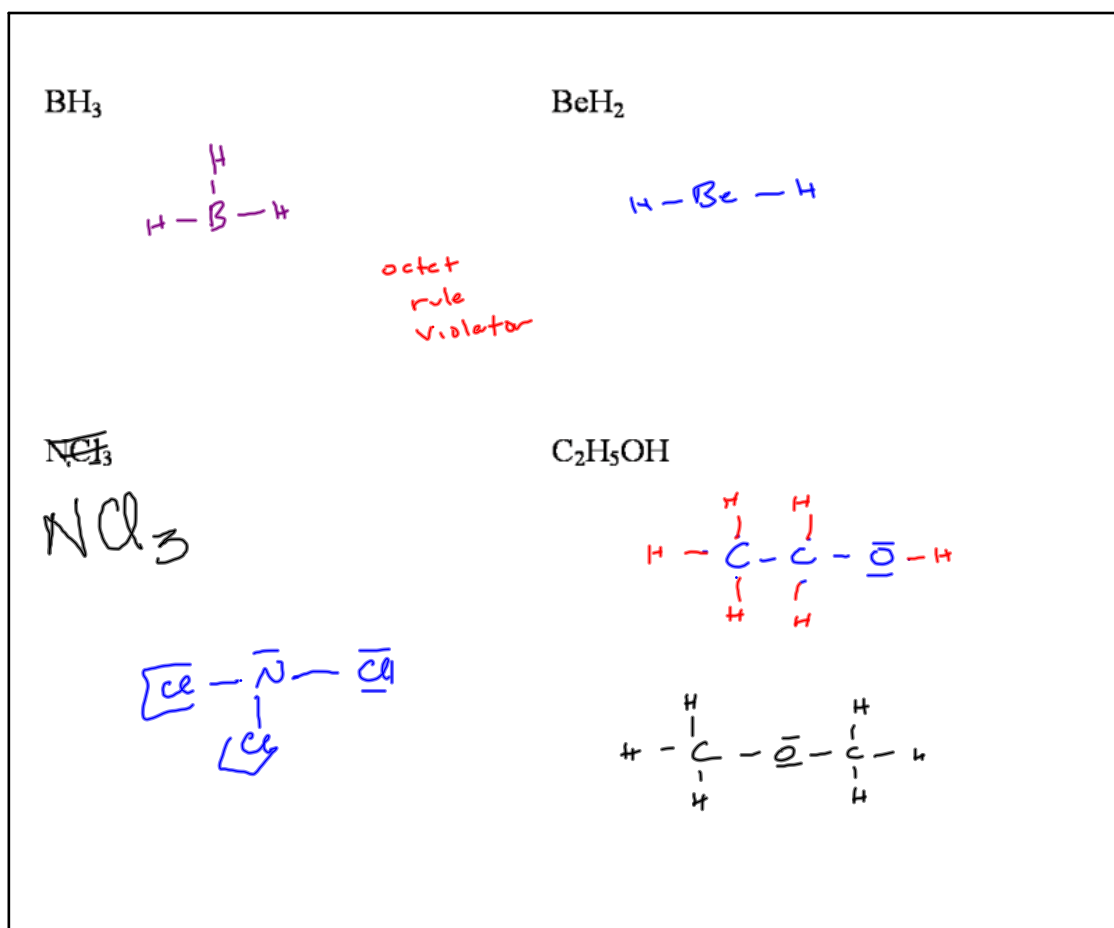
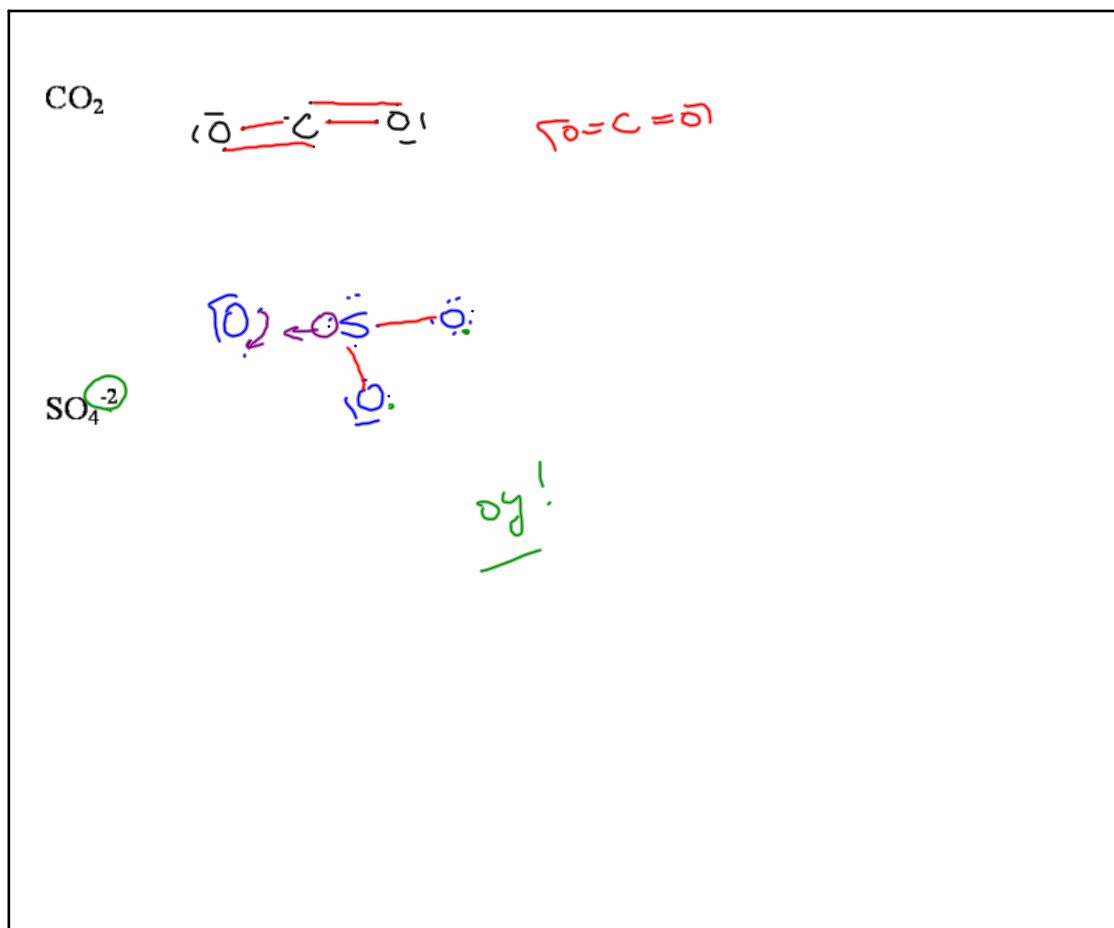


Nov 4-7:02 AM



Nov 4-7:02 AM



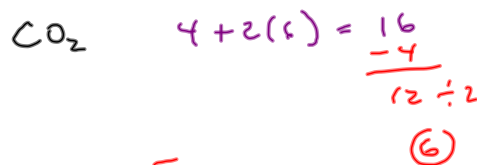
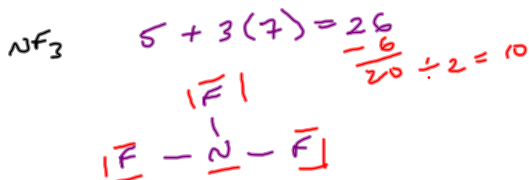
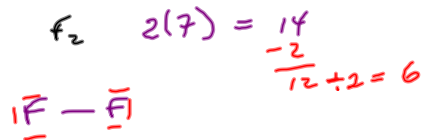
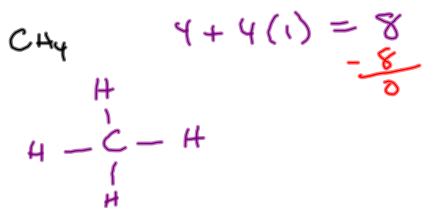
Nov 4-7:02 AM

Lewis' Rules

- ① Count e⁻
- ② Arrange atoms
- ③ Single bond everything
- ④ Add rest of e⁻
 - in pairs
 - outside in
- ⑤ Fix octets
 - if needed
 - if possible

Nov 4-7:02 AM

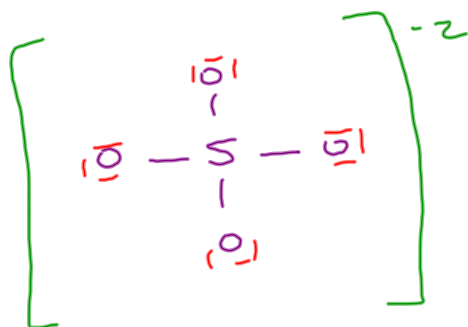
Examples: CH₄, F₂, NF₃, CO₂



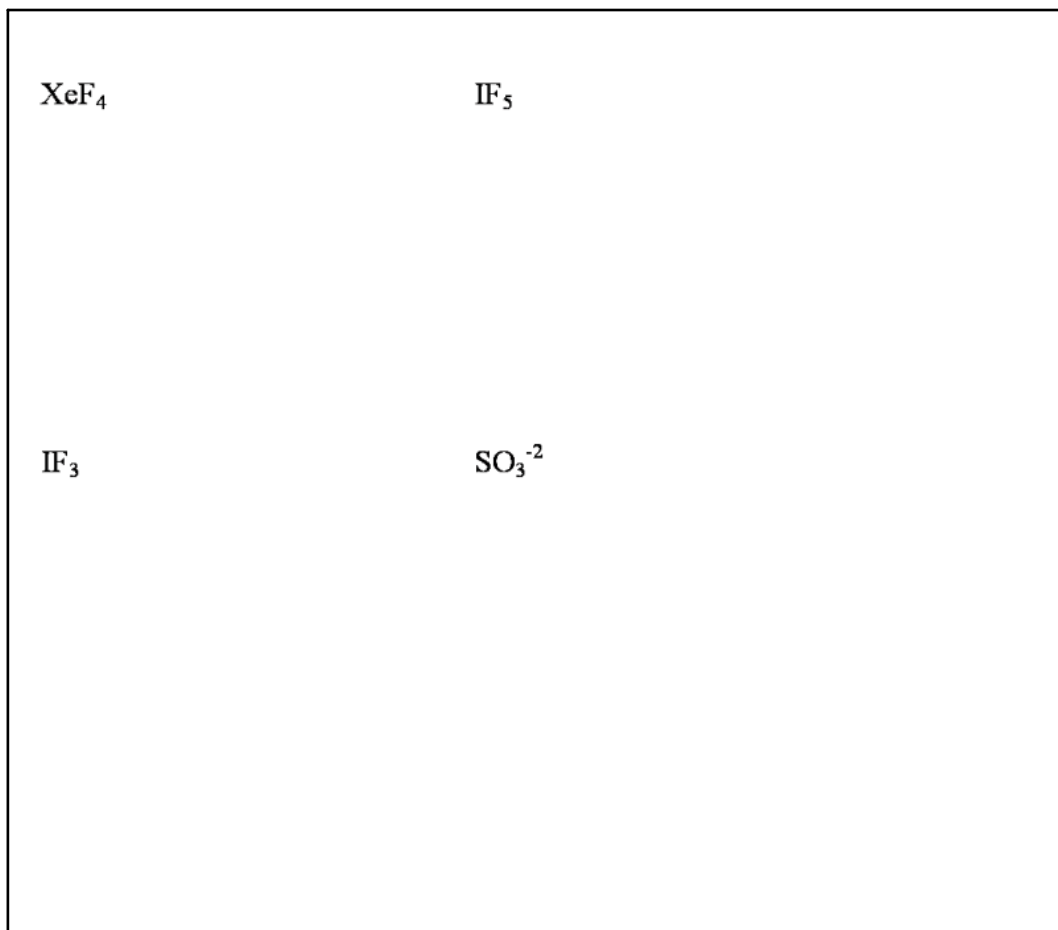
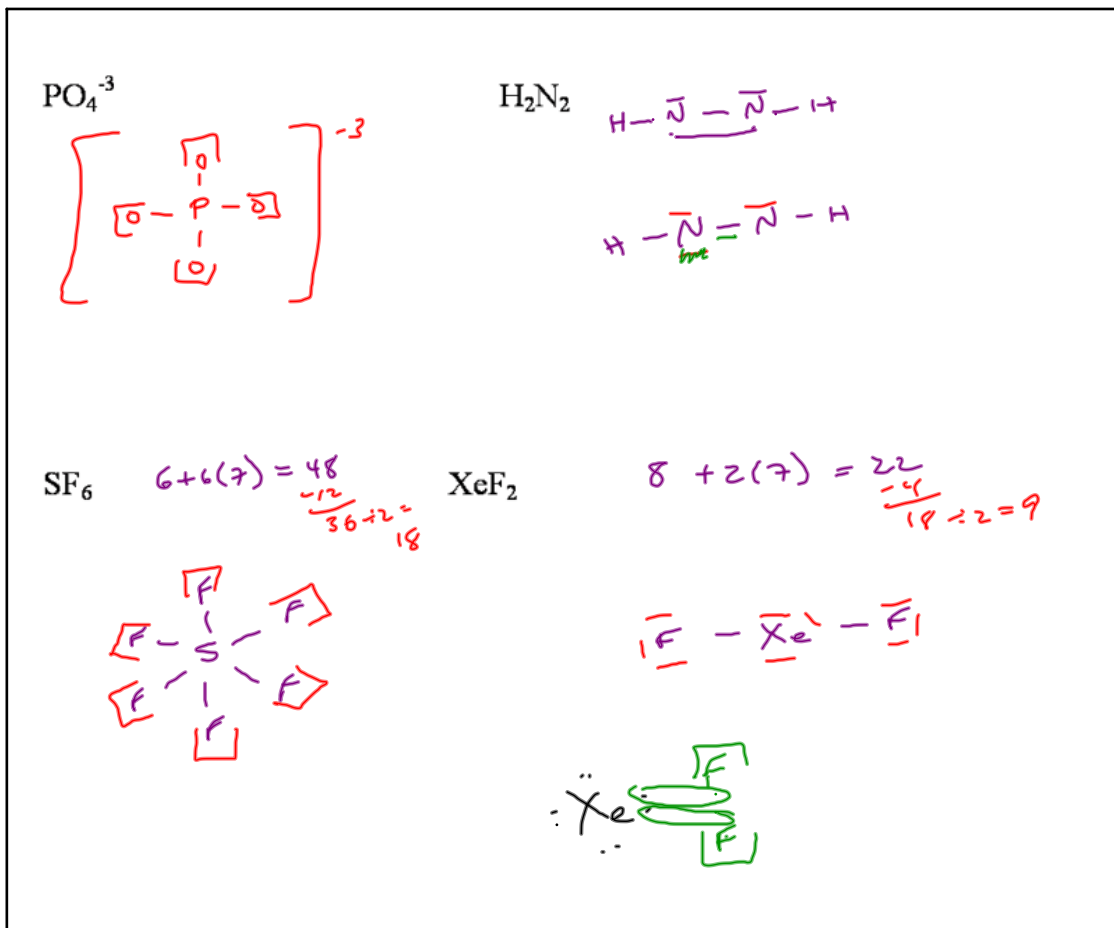
Nov 4-7:02 AM

SO₄⁻²

6 + 4(6) + 2 = 32
 -8
 24 ÷ 2 = 12

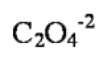


Nov 4-7:02 AM





Nov 4-7:02 AM



Nov 4-7:02 AM



Nov 4-7:02 AM



Nov 4-7:02 AM



Nov 4-7:02 AM