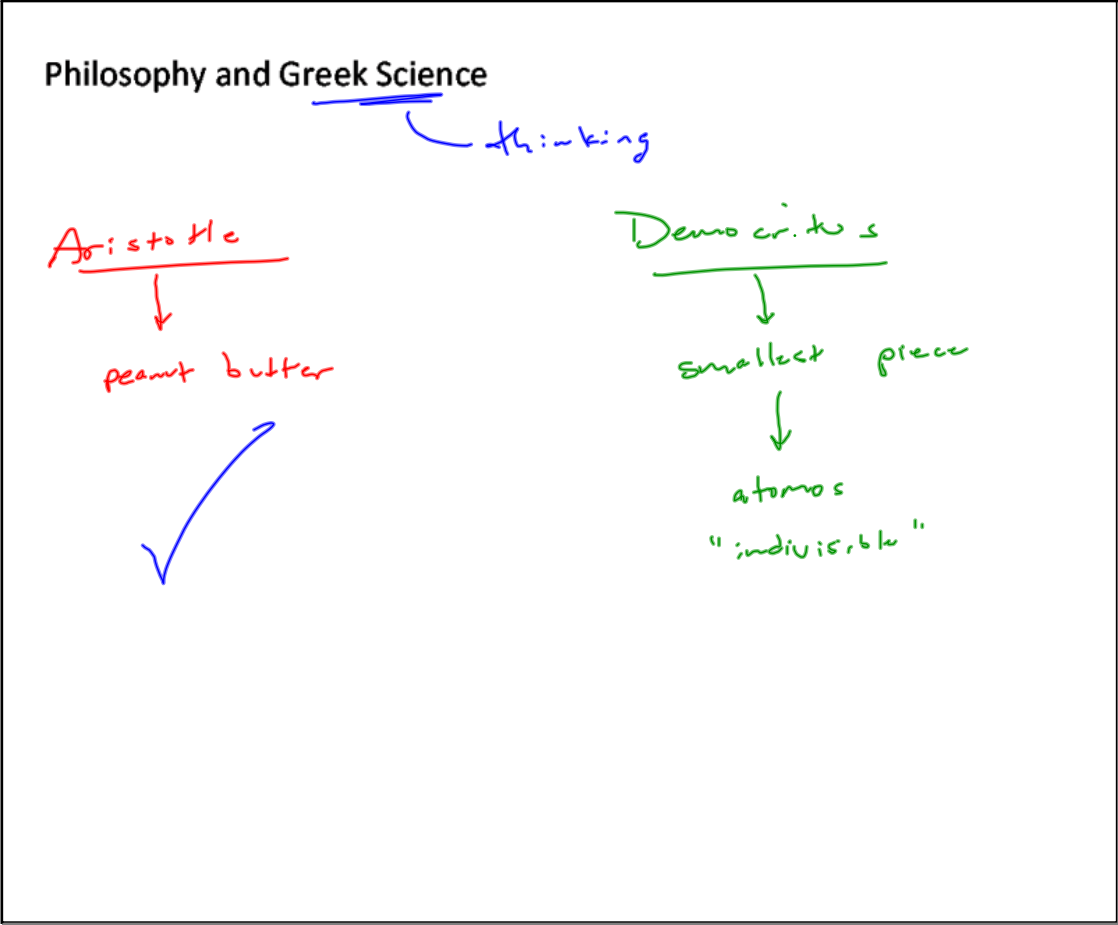


An apology...

Sep 21-7:03 AM



Sep 21-7:03 AM

Alchemy \rightarrow Philosopher's Stone



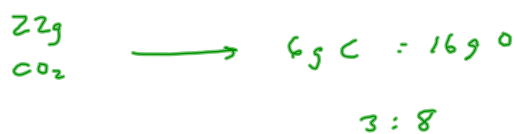
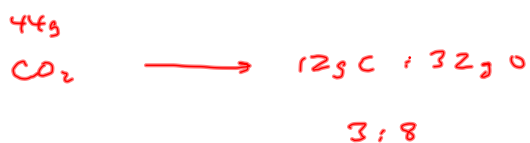
Cl + Au Pt

measurements - 2 laws

Sep 21-7:03 AM

Law of Definite Proportions

The ratio of masses between elements
in a compound is constant



Sep 21-7:03 AM

Law of Multiple Proportions

If two compounds made of same elements
 the ratio of the masses of element 2
 that mix with 1g of element 1 is
 a simple number



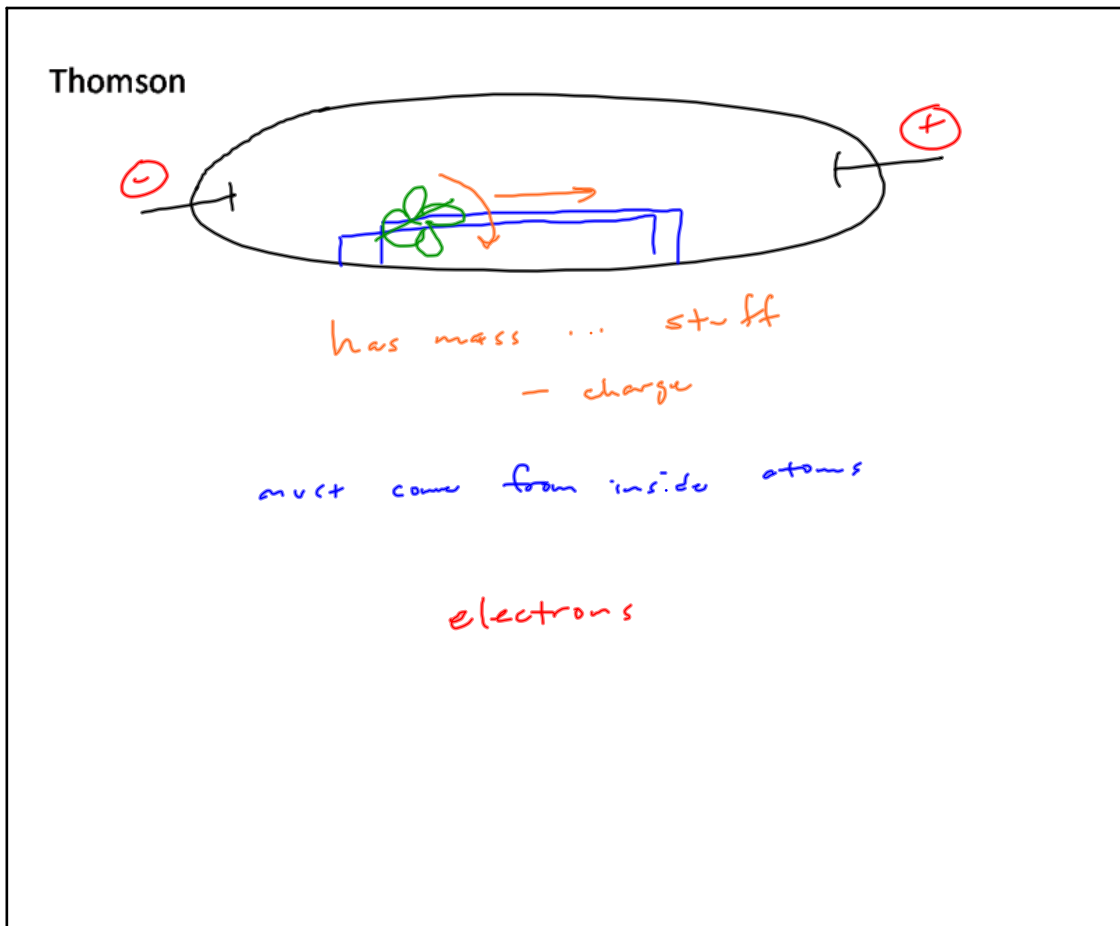
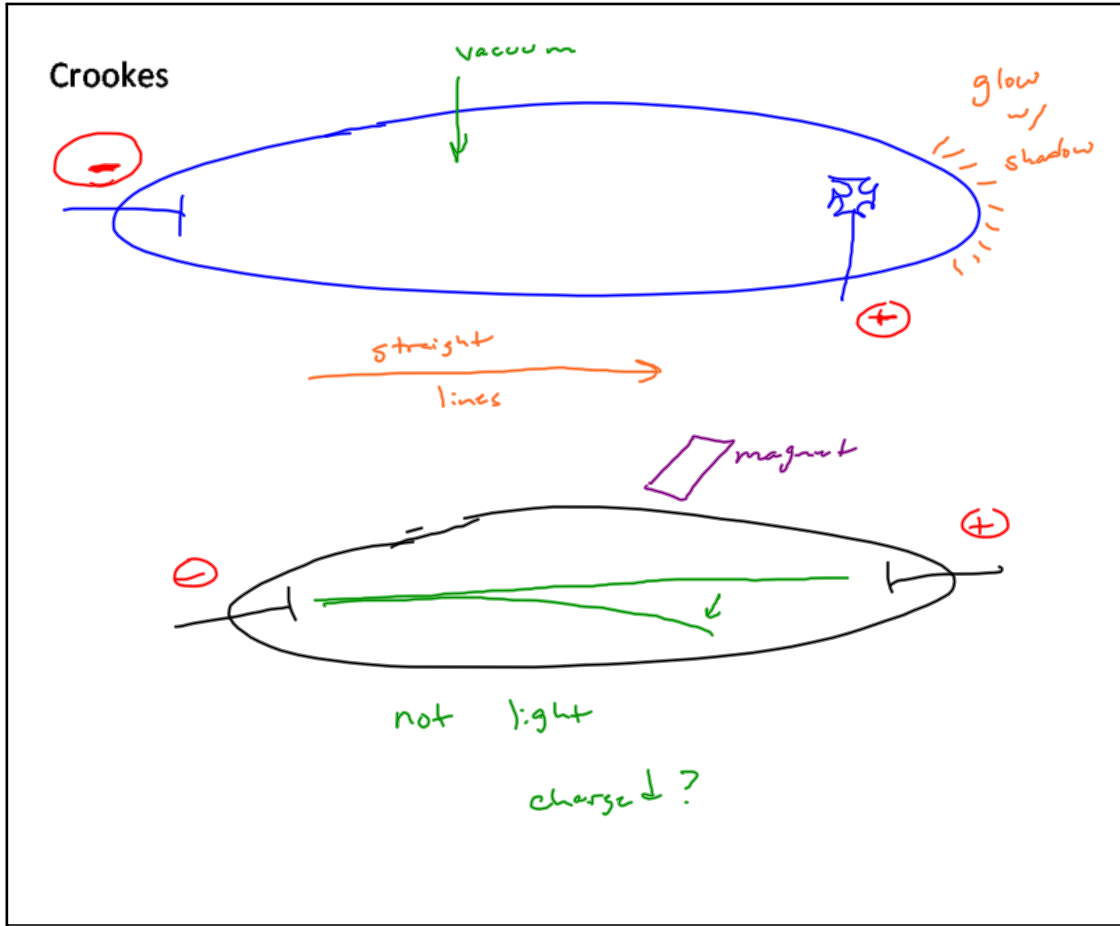
Sep 21-7:03 AM

Dalton — Atomic Theory

- atoms are indivisible
- everything is made of atoms
- all atoms of same element R same
- atoms combine in whole # ratios

rxn → combining/rearranging
 of atoms

Sep 21-7:03 AM



Thomson's Atom



Plum Pudding Model

Sep 21-7:03 AM

Thomson's math

$F_{\text{centr.}} = \frac{mv^2}{r} = F_{\text{mag}} = Bqv \sin \theta$
 $\frac{mv^2}{r} = Bqv \sin \theta$
 mag. field strength \downarrow
 charge \uparrow
 $\theta = 90$
 between mag + movement

straight
 $F_{\text{mag}} = F_{\text{elec.}}$
 $Bqv = Eq$
 elec. field strength

Sep 21-7:03 AM